

**Estratto** Catalogo Listino 01/2025

# Gamma POLO-KAL NG

PURE  
PROGRESS / **poloplast**

## Strato esterno in PP/C

Miscela di polipropilene molto resistente alle abrasioni e agli urti anche in condizioni di temperatura rigida e con un'estrema tenuta agli agenti atmosferici

## Strato intermedio in PP/MV

La fibra minerale conferisce grande elasticità garantendo il contenimento dell'energia sonora tramite il principio fisico di «massa/molla/massa»

## Strato interno in PP/C

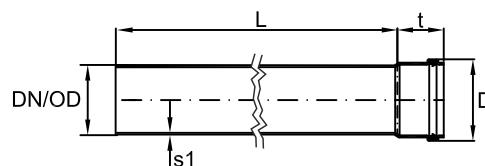
Miscela di polipropilene perfettamente liscia, stabile sino a 95°C e resistente alle frizioni

## Tenuta a innesto

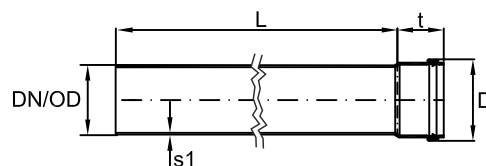
Guarnizione monolabro idonea allo scorrimento nel caso di dilatazioni termiche e dalla sicura tenuta idraulica



## NGEM Tubo stratificato con 1 bicchiere

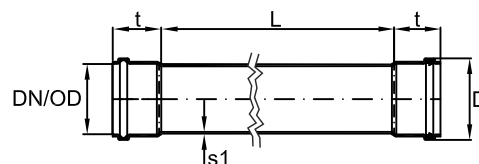


Codice		DN	D max	L mm.	S1-min mm.	t-min mm.	Peso Kg./pz.	Conf. Pezzi	Conf. Bancale	€/Pz.
NG032150	2000	32	41	150	1,8	41,0	0,03	20	2000	2,45
NG032250	2001	32	41	250	1,8	41,0	0,05	20	1200	3,20
NG032500	2002	32	41	500	1,8	41,0	0,10	20	400	4,30
NG031000	2003	32	41	1000	1,8	41,0	0,21	10	960	6,60
NG031500	2004	32	41	1500	1,8	41,0	0,31	10	300	10,25
NG032000	2005	32	41	2000	1,8	41,0	0,41	10	300	12,55
NG033000	2006	32	41	3000	1,8	41,0	0,58	10	300	19,10
NG040150	2010	40	53	150	1,8	45,0	0,04	20	1200	2,45
NG040250	2011	40	53	250	1,8	45,0	0,07	20	800	3,20
NG040500	2012	40	53	500	1,8	45,0	0,13	20	400	4,30
NG041000	2013	40	53	1000	1,8	45,0	0,26	10	720	6,60
NG041500	2014	40	53	1500	1,8	45,0	0,39	10	280	10,25
NG042000	2015	40	53	2000	1,8	45,0	0,52	10	280	12,55
NG043000	2016	40	53	3000	1,8	45,0	0,78	10	280	19,10
NG050150	2020	50	63	150	2,0	47,0	0,06	20	800	2,80
NG050250	2021	50	63	250	2,0	47,0	0,09	20	720	3,35
NG050500	2022	50	63	500	2,0	47,0	0,19	20	400	4,45
NG051000	2023	50	63	1000	2,0	47,0	0,37	10	510	6,60
NG051500	2024	50	63	1500	2,0	47,0	0,56	10	240	10,85
NG052000	2025	50	63	2000	2,0	47,0	0,74	10	240	13,75
NG053000	2026	50	63	3000	2,0	47,0	1,12	10	240	21,30
NG070150	2030	75	89	150	2,6	53,0	0,11	20	480	5,10
NG070250	2031	75	89	250	2,6	53,0	0,19	20	360	5,95
NG070500	2032	75	89	500	2,6	53,0	0,38	20	240	7,95
NG071000	2033	75	89	1000	2,6	53,0	0,75	8	240	11,10
NG071500	2034	75	89	1500	2,6	53,0	1,13	8	96	16,10
NG072000	2035	75	89	2000	2,6	53,0	1,51	8	96	21,00
NG073000	2036	75	89	3000	2,6	53,0	2,26	8	96	31,05
NG090150	2070	90	106	150	3,0	57,0	0,16	20	240	6,15
NG090250	2071	90	106	250	3,0	57,0	0,26	20	180	7,70
NG090500	2072	90	106	500	3,0	57,0	0,53	20	80	11,55
NG091000	2073	90	106	1000	3,0	57,0	1,06	6	180	17,95
NG091500	2074	90	106	1500	3,0	57,0	1,58	6	96	25,30
NG092000	2075	90	106	2000	3,0	57,0	2,11	6	96	33,95
NG093000	2076	90	106	3000	3,0	57,0	3,17	6	96	48,60
NG110150	2040	110	128	150	3,4	62,0	0,22	20	180	6,25
NG110250	2041	110	128	250	3,4	62,0	0,37	20	120	7,85
NG110500	2042	110	128	500	3,4	62,0	0,74	20	80	11,75
NG111000	2043	110	128	1000	3,4	62,0	1,49	4	128	18,35
NG111500	2044	110	128	1500	3,4	62,0	2,23	4	48	25,85
NG112000	2045	110	128	2000	3,4	62,0	2,97	4	48	34,70
NG113000	2046	110	128	3000	3,4	62,0	4,46	4	48	50,00

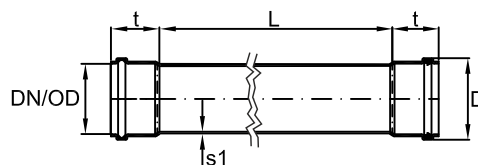
**NGEM** Tubo stratificato con 1 bicchiere

Codice		DN	D max	L mm.	S1-min mm.	t-min mm.	Peso Kg./pz.	Conf. Pezzi	Conf. Bancale	€/Pz.
NG125250	2051	125	145	250	3,9	67,0	0,48	1	90	11,85
NG125500	2052	125	145	500	3,9	67,0	0,97	1	45	17,00
NG121000	2053	125	145	1000	3,9	67,0	1,94	1	40	27,10
NG121500	2054	125	145	1500	3,9	67,0	2,91	1	40	36,80
NG122000	2055	125	145	2000	3,9	67,0	3,88	1	40	49,90
NG123000	2056	125	145	3000	3,9	67,0	5,82	1	40	69,60
NG160250	2061	160	184	250	4,9	77,0	0,79	1	56	16,60
NG160500	2062	160	184	500	4,9	77,0	1,58	1	28	25,95
NG161000	2063	160	184	1000	4,9	77,0	3,16	1	36	40,20
NG162000	2065	160	184	2000	4,9	77,0	6,32	1	36	74,80
NG163000	2066	160	184	3000	4,9	77,0	9,47	1	36	106,00
NG201000	2951	200	228	1000	6,8	122,0	5,78	1	25	72,00
NG203000	2953	200	228	3000	6,8	122,0	17,34	1	25	196,00
NG206000	2954	200	228	6000	6,8	122,0	32,70	1	25	398,00
NG251000	2956	250	289	1000	8,6	156,0	9,29	1	16	112,00
NG253000	2959	250	289	3000	8,6	156,0	27,87	1	16	294,00

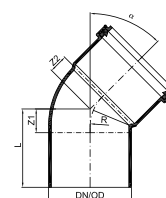
POLO-KAL NG

**NGDM** Tubo stratificato con 2 bicchieri

Codice	DN	D max	L mm.	S1-min mm.	t-min mm.	Peso Kg./pz.	Conf. Pezzi	Conf. Bancale	€/Pz.	
NGD31000	1951	32	41	1000	1,8	41,0	0,218	10	960	7,85
NGD32000	1953	32	41	2000	1,8	41,0	0,411	10	300	14,90
NGD33000	1954	32	41	3000	1,8	41,0	0,604	10	300	22,20
NGD41000	1956	40	53	1000	1,8	45,0	0,280	10	720	7,85
NGD41500	1957	40	53	1500	1,8	45,0	0,402	10	280	11,95
NGD42000	1958	40	53	2000	1,8	45,0	0,525	10	280	14,90
NGD43000	1959	40	53	3000	1,8	45,0	0,770	10	280	22,20
NGD51000	1961	50	63	1000	2,0	47,0	0,398	10	510	7,95
NGD51500	1962	50	63	1500	2,0	47,0	0,571	10	240	12,40
NGD52000	1963	50	63	2000	2,0	47,0	0,743	10	240	16,20
NGD53000	1964	50	63	3000	2,0	47,0	1,088	10	240	24,70
NGD71000	1966	75	89	1000	2,6	53,0	0,795	8	240	13,25
NGD72000	1968	75	89	2000	2,6	53,0	1,484	8	96	24,70
NGD73000	1969	75	89	3000	2,6	53,0	2,173	8	96	35,90

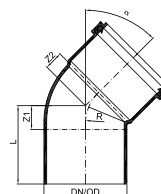
**NGDM** Tubo stratificato con 2 bicchieri

Codice	DN	D max	L mm.	S1-min mm.	t-min mm.	Peso Kg./pz.	Conf. Pezzi	Conf. Bancale	€/Pz.	
NGD91000	1971	90	106	1000	3,0	57,0	1,189	6	180	21,60
NGD91500	1972	90	106	1500	3,0	57,0	1,698	6	96	30,25
NGD92000	1973	90	106	2000	3,0	57,0	2,206	6	96	39,90
NGD93000	1974	90	106	3000	3,0	57,0	3,223	6	96	56,20
NGD11100	1976	110	128	1000	3,4	62,0	1,594	4	128	21,90
NGD11500	1977	110	128	1500	3,4	62,0	2,267	4	48	30,35
NGD11200	1978	110	128	2000	3,4	62,0	2,940	4	48	40,60
NGD11300	1979	110	128	3000	3,4	62,0	4,280	4	48	57,00

**NGB** Curva

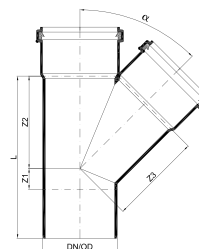
Codice		DN	α	Z1 mm.	Z2 mm.	R mm.	L mm.	Peso Kg./pz.	Conf. Pezzi	Conf. Bancale	€/Pz.
NG032015	2100	32	15°	3,0	7,0	18,0	44,0	0,03	20	2000	2,65
NG032030	2101	32	30°	5,0	9,0	18,0	46,0	0,03	20	2000	2,65
NG032045	2102	32	45°	7,0	12,0	18,0	48,0	0,03	20	2000	2,55
NG032067	2103	32	67,5°	12,0	16,0	18,0	52,0	0,03	20	2000	3,00
NG032087	2104	32	87,5°	16,0	20,0	18,0	57,0	0,03	20	2000	2,75
NG040015	2110	40	15°	7,0	8,0	21,0	51,0	0,04	20	2000	2,65
NG040030	2111	40	30°	10,0	11,0	21,0	54,0	0,04	20	2000	2,65
NG040045	2112	40	45°	13,0	14,0	21,0	57,0	0,04	20	2000	2,55
NG040067	2113	40	67,5°	18,0	19,0	21,0	62,0	0,05	20	2000	3,00
NG040087	2114	40	87,5°	24,0	25,0	21,0	68,0	0,05	20	1200	2,75
NG050015	2120	50	15°	7,0	8,0	27,0	56,0	0,05	20	1200	3,55
NG050030	2121	50	30°	11,0	12,0	27,0	60,0	0,06	20	1200	3,25
NG050045	2122	50	45°	15,0	16,0	27,0	63,0	0,06	20	1200	3,15
NG050067	2123	50	67,5°	22,0	22,0	27,0	70,0	0,06	20	1200	4,45
NG050087	2124	50	87,5°	29,0	30,0	27,0	78,0	0,07	20	800	3,55
NG070015	2130	75	15°	9,0	10,0	40,0	64,0	0,12	20	480	5,55
NG070030	2131	75	30°	15,0	15,0	40,0	70,0	0,12	20	480	5,55
NG070045	2132	75	45°	21,0	20,0	40,0	75,0	0,15	20	480	5,55
NG070067	2133	75	67,5°	31,0	31,0	40,0	86,0	0,13	20	480	7,60
NG070087	2134	75	87,5°	42,0	42,0	40,0	97,0	0,15	20	360	7,30
NG090015	2170	90	15°	13,0	8,0	47,0	73,0	0,16	20	360	8,35
NG090030	2171	90	30°	13,0	19,0	47,0	72,0	0,17	20	360	8,35
NG090045	2172	90	45°	26,0	20,0	47,0	85,0	0,19	20	360	7,95
NG090067	2173	90	67,5°	33,0	27,0	47,0	92,0	0,21	20	240	9,05
NG090087	2174	90	87,5°	50,0	42,0	47,0	109,0	0,22	20	240	8,45

## NGB Curva



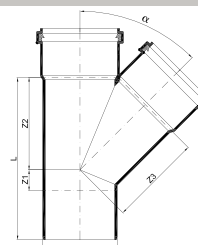
Codice	DN	α	Z1 mm.	Z2 mm.	R mm.	L mm.	Peso Kg./pz.	Conf. Pezzi	Conf. Bancale	€/Pz.	
NG110015	2140	110	15°	13,0	13,0	57,0	80,0	0,26	20	180	8,45
NG110030	2141	110	30°	21,0	20,0	58,0	88,0	0,28	20	180	8,45
NG110045	2142	110	45°	49,0	29,0	57,0	116,0	0,36	20	180	7,90
NG110067	2143	110	67,5°	44,0	44,0	58,0	111,0	0,33	20	180	9,15
NG110087	2144	110	87,5°	60,0	60,0	58,0	128,0	0,37	20	180	8,45
NG125015	2150	125	15°	12,0	13,0	90,0	85,0	0,36	20	180	16,20
NG125030	2151	125	30°	20,0	22,0	90,0	93,0	0,39	20	120	16,20
NG125045	2152	125	45°	50,0	31,0	90,0	124,0	0,43	20	160	16,20
NG125067	2153	125	67,5°	46,0	48,0	90,0	119,0	0,49	20	160	24,20
NG125087	2154	125	87,5°	64,0	66,0	90,0	138,0	0,53	20	80	23,70
NG160015	2160	160	15°	36,0	16,0	115,0	121,0	0,72	10	60	25,10
NG160030	2161	160	30°	25,0	28,0	115,0	133,0	0,80	10	60	25,10
NG160045	2162	160	45°	60,0	41,0	115,0	145,0	0,78	10	80	25,10
NG160087	2164	160	87,5°	84,0	87,0	115,0	169,0	0,98	10	40	38,70
NG200045	2963	200	45°	66,0	52,0	120,0	183,0	1,85	1	40	118,00
NG200087	2965	200	87,5°	106,0	115,0	125,0	230,0	2,36	1	25	149,00
NG250045	2968	250	45°	113,0	152,0	-	270,0	5,02	1	18	221,00
NG250087	2970	250	87,5°	236,0	275,0	-	392,0	6,32	1	9	233,00

## NGEA Braga



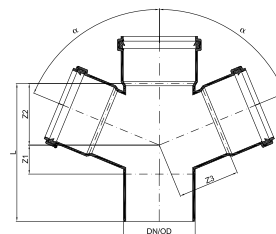
Codice	DN D/D1	$\alpha$	Z1 mm.	Z2 mm.	Z3 mm.	L mm.	Peso Kg./pz.	Conf. Pezzi	Conf. Bancale	€/Pz.
NG030345	2200 32/32	45°	7,0	45,0	45,0	93,0	0,05	10	1000	5,75
NG040345	2203 40/32	45°	7,0	49,0	50,0	100,0	0,07	10	1000	5,95
NG040445	2206 40/40	45°	13,0	54,0	54,0	111,0	0,08	10	600	6,00
NG050345	2209 50/32	45°	2,0	54,0	57,0	104,0	0,08	10	600	7,30
NG050445	2212 50/40	45°	8,0	59,0	61,0	115,0	0,10	10	400	7,30
NG050545	2215 50/50	45°	15,0	66,0	66,0	129,0	0,11	10	400	7,30
NG070545	2218 75/50	45°	3,0	80,0	84,0	138,0	0,20	10	240	10,05
NG070745	2221 75/75	45°	21,0	98,0	98,0	173,0	0,28	10	180	10,05
NG090545	2210 90/50	45°	-2,0	84,0	92,0	142,0	0,26	10	180	16,40
NG090745	2834 90/75	45°	14,0	114,0	117,0	187,0	0,35	10	120	16,85
NG090945	2211 90/90	45°	25,0	112,0	112,0	196,0	0,40	10	120	16,70
NG110445	2204 110/40	45°	-14,0	92,0	106,0	145,0	0,35	10	180	16,60
NG110545	2224 110/50	45°	-13,0	99,0	109,0	153,0	0,38	10	180	16,70
NG110745	2227 110/75	45°	5,0	117,0	123,0	189,0	0,48	10	120	16,90
NG110945	2839 110/90	45°	19,0	132,0	135,0	218,0	0,55	10	90	16,80

## NGEA Braga

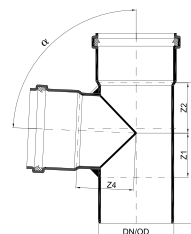
BRAGA  
VENTILATA

POLO-KAL NG

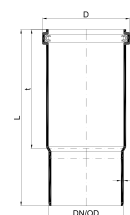
Codice	DN D/D1	α	Z1 mm.	Z2 mm.	Z3 mm.	L mm.	Peso Kg./pz.	Conf. Pezzi	Conf. Bancale	€/Pz.
NG111145	2230 110/110	45°	47,0	144,0	144,0	259,0	0,67	10	80	16,90
□ NG120745	2233 125/75	45°	12,0	130,0	139,0	215,0	0,66	10	90	28,65
□ NG120945	2843 125/90	45°	28,0	161,0	183,0	262,0	1,02	10	80	38,50
NG121145	2236 125/110	45°	40,0	161,0	154,0	274,0	0,86	10	80	38,80
NG121245	2239 125/125	45°	50,0	161,0	160,0	284,0	0,96	10	40	58,70
NG161145	2242 160/110	45°	29,0	174,0	184,0	287,0	1,26	5	45	60,80
NG161645	2245 160/160	45°	59,0	209,0	209,0	353,0	1,83	5	20	92,00
NG201645	2971 200/160	45°	41,0	229,0	253,0	388,0	3,23	1	16	147,00
NG202045	2973 200/200	45°	59,0	240,0	240,0	423,0	4,00	1	14	192,00
□ NG251645	2975 250/160	45°	215,0	301,0	320,0	672,0	7,75	1	12	217,00
□ NG252545	2979 250/250	45°	144,0	361,0	363,0	669,0	10,32	1	5	344,00
NG040467	2207 40/40	67,5°	18,0	35,0	35,0	97,0	0,08	10	600	6,05
NG050567	2216 50/50	67,5°	22,0	42,0	42,0	112,0	0,10	10	400	7,35
NG090967	2831 90/90	67,5°	36,0	77,0	76,0	172,0	0,35	10	120	16,80
NG111167	2231 110/110	67,5°	44,0	93,0	92,0	203,0	0,58	10	90	17,00
NG040487	2208 40/40	87,5°	24,0	25,0	25,0	94,0	0,07	10	600	6,00
NG050487	2214 50/40	87,5°	24,0	25,0	30,0	98,0	0,09	10	600	7,30
NG050587	2217 50/50	87,5°	29,0	30,0	30,0	108,0	0,10	10	400	7,30
NG070587	2220 75/50	87,5°	30,0	32,0	43,0	117,0	0,18	10	360	10,05
NG070787	2223 75/75	87,5°	42,0	45,0	45,0	142,0	0,23	10	240	10,05
NG090587	2830 90/50	87,5°	29,0	35,0	52,0	123,0	0,23	10	240	16,40
★ NG090987	2248 90/90	87,5°	70,0	59,0	64,0	189,0	0,29	10	180	16,70
NG110587	2226 110/50	87,5°	30,0	34,0	61,0	132,0	0,34	10	180	16,70
NG110787	2229 110/75	87,5°	43,0	48,0	63,0	158,0	0,42	10	120	16,90
NG110987	2836 110/90	87,5°	19,0	132,0	135,0	218,0	0,47	10	90	16,80
★ NG111187	2232 110/110	87,5°	82,0	88,0	76,0	219,0	0,58	10	120	16,90
NG121187	2238 125/110	87,5°	67,0	76,0	75,0	216,0	0,71	10	80	38,80
NG121287	2241 125/125	87,5°	65,0	76,0	75,0	215,0	0,76	10	60	58,70
NG161187	2244 160/110	87,5°	81,0	95,0	107,0	261,0	1,21	5	45	60,80
NG161687	2247 160/160	87,5°	115,0	118,0	118,0	310,0	1,72	5	40	92,00
□ NG201687	2972 200/160	87,5°	112,0	127,0	134,0	361,0	2,90	1	20	158,00
NG202087	2974 200/200	87,5°	140,0	127,0	126,0	388,0	3,80	1	15	219,00
□ NG251687	2976 250/160	87,5°	110,0	127,0	193,0	394,0	4,91	1	12	249,00
□ NG252587	2980 250/250	87,5°	159,0	156,0	161,0	471,0	7,47	1	7	368,00

**NGDA** Braga doppia 67,5°

Codice	DN	D/D1/D2	α	Z1 mm.	Z2 mm.	Z3 mm.	L mm.	Peso Kg./pz.	Conf. Pezzi	Conf. Bancale	€/Pz.
NGDA0905	2848	90/50/50	67,5°	16,0	59,0	74,0	144,0	0,33	10	180	29,30
NGDA0090	2846	90/90/90	67,5°	36,0	77,0	77,0	173,0	0,44	10	90	33,50
NGDA1105	2260	110/50/50	67,5°	14,0	57,0	78,0	139,0	0,38	10	120	28,30
NGDA0110	2261	110/110/110	67,5°	44,0	95,0	96,0	206,0	0,74	10	80	33,50
NGDA1211	2262	125/110/110	67,5°	48,0	101,0	104,0	218,0	0,88	5	60	52,90
NGDA1611	2264	160/110/110	67,5°	73,0	127,0	133,0	268,0	1,37	5	40	61,80

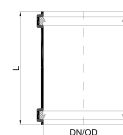
**NGED** Braga a scagno 87,5°

Codice	DN	D/D1/D2	α	Z1 mm.	Z2 mm.	Z3 mm.	L mm.	Peso Kg./pz.	Conf. Pezzi	Conf. Bancale	€/Pz.
NG090909	2829	90/90/90	87,5°	49,0	59,0	59,0	168,0	0,44	10	120	80,70
NG111111	2275	110/110/110	87,5°	69,0	69,0	96,0	196,0	0,64	10	40	77,00

**NGL** Bicchiere a 2 e 3 lunghezze

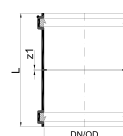
Codice	DN	N° lunghezze	L mm.	t mm.	Peso Kg./pz.	Conf. Pezzi	Conf. Bancale	€/Pz.	
NGLL0040	2331	40	3	158,0	107,0	0,06	10	1000	4,25
NGLL0050	2332	50	3	174,0	119,0	0,07	10	600	5,70
NGLL0070	2333	75	3	198,0	136,0	0,18	10	360	8,15
NGLL0090	2338	90	3	212,0	143,0	0,23	10	240	12,80
NGLL0110	2334	110	3	243,0	165,0	0,37	10	180	12,90
NGLL0125	2335	125	2	316,0	187,0	0,63	10	120	17,40
NGLL0160	2336	160	2	328,0	215,0	1,02	10	40	32,50
NGLL0200	2339	200	2	502,0	280,0	2,77	1	20	167,00

## NGU Manicotto scorrevole



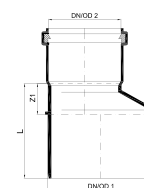
Codice	DN	L mm.	Peso Kg./pz.	Conf. Pezzi	Conf. Bancale	€/Pz.
NGU00040 2311	40	96,0	0,05	10	1500	3,90
NGU00050 2312	50	104,0	0,06	10	1000	4,15
NGU00070 2313	75	118,0	0,13	10	400	5,60
NGU00090 2319	90	127,0	0,17	10	360	9,35
NGU00110 2314	110	145,0	0,28	10	240	9,45
NGU00200 2984	200	240,0	1,50	1	54	110,00

## NGMM Manicotto con battente



Codice	DN	Z1 mm.	L mm.	Peso Kg./pz.	Conf. Pezzi	Conf. Bancale	€/Pz.
NGMM0032 2300	32	2,0	87,0	0,03	10	1500	3,90
NGMM0040 2301	40	2,0	96,0	0,07	10	1500	3,90
NGMM0050 2302	50	2,0	104,0	0,06	10	1000	4,15
NGMM0070 2303	75	2,0	118,0	0,13	10	400	5,60
NGMM0090 2307	90	2,0	127,0	0,17	10	360	9,35
NGMM0110 2304	110	3,0	145,0	0,28	10	240	9,45
NGMM0125 2305	125	4,0	157,0	0,40	20	180	17,80
NGMM0160 2306	160	4,0	180,0	0,69	1	60	26,70
NGMM0200 2986	200	4,0	240,0	1,53	1	54	110,00
NGMM0250 2987	250	9,0	292,0	3,02	1	22	173,00

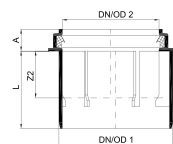
## NGR Aumento



Codice	DN D/D1	Z1 mm.	L mm.	Peso Kg./pz.	Conf. Pezzi	Conf. Bancale	€/Pz.
NG032040 2280	32/40	23,0	65,0	0,03	20	2000	4,25
NG032050 2281	32/50	24,0	72,0	0,04	20	1200	4,25
NG040050 2282	40/50	20,0	65,0	0,05	20	1200	4,15
NG050075 2283	50/75	31,0	79,0	0,09	20	720	5,40
NG050110 2284	50/110	47,0	113,0	0,19	20	360	7,85
NG075110 2285	75/110	32,0	99,0	0,20	20	480	7,95
NG110125 2286	110/125	18,0	92,0	0,31	20	180	14,15
NG125160 2288	125/160	32,0	117,0	0,54	20	180	21,40
NG160200 2981	160/200	47,0	171,0	1,31	1	60	131,00
NG200250 2983	200/250	177,0	299,0	2,96	1	26	249,00

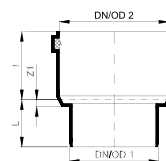


## NGRR Aumento corto



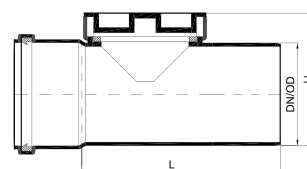
Codice	DN D/D1	Z2 mm.	A mm.	L mm.	Peso Kg./pz.	Conf. Pezzi	Conf. Bancale	€/Pz.
NGC32040 2201	32/40	43,0	14,0	45,0	0,02	20	3000	4,40
NGC40050 2330	40/50	31,0	17,0	66,0	0,04	20	2000	4,40
NGC50075 2875	50/75	33,0	17,0	54,0	0,08	20	800	6,30
NGC50090 2292	50/90	32,0	17,0	66,0	0,11	20	800	7,90
NGC50110 2876	50/110	32,0	18,0	66,0	0,16	20	480	9,30
NGC75090 2289	75/90	37,0	17,0	61,0	0,12	20	720	8,00
NGC75110 2877	75/110	38,0	19,0	66,0	0,16	20	480	9,45
NGC90110 2290	90/110	40,0	19,0	66,0	0,17	20	480	8,65
NGC11160 2878	110/160	58,0	19,0	89,0	0,43	20	180	23,40

## NGRS Riduzione speciale

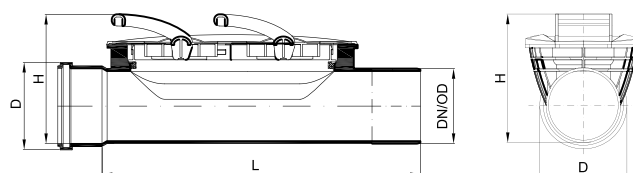


Codice	DN D/D1	Z1 mm.	t mm.	L mm.	Peso Kg./pz.	Conf. Pezzi	Conf. Bancale	€/Pz.
NGRS0504 1786	50/40	41,0	47,0	88,0	0,06	10	600	18,30
NGRS1109 1791	110/90	7,0	69,0	47,0	0,18	10	360	18,40

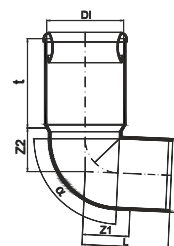
## NGRE Ispezione



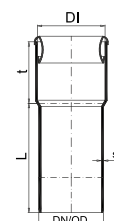
Codice	DN	L mm.	H mm.	Peso Kg./pz.	Conf. Pezzi	Conf. Bancale	€/Pz.
NGRE0050 2342	50	116,0	63,0	0,09	10	600	13,00
NGRE0070 2343	75	156,0	94,0	0,25	10	360	16,05
NGRE0090 2347	90	174,0	116,0	0,40	10	180	23,70
NGRE0110 2344	110	205,0	138,0	0,62	10	120	23,90
○ NGRE0125 2345	125	256,0	165,0	0,72	10	60	48,10
NGRE0160 2346	160	244,0	213,0	1,14	5	60	73,90
NGRE0200 2992	200	358,0	238,0	2,62	1	20	202,00
□ NGRE0250 2993	250	409,0	295,0	4,80	1	12	259,00

**NGEHP** Tubo con ispezione per la pulizia

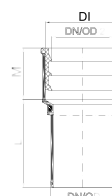
Codice	DN	D mm.	L mm.	H mm.	Peso Kg./pz.	Conf. Pezzi	€/Pz.
NGEHP110 1900	110	129	468,0	196,0	2,30	1	366,00
NGEHP125 1901	125	146	474,0	222,0	2,50	1	419,00
NGEHP160 1902	160	185	488,0	251,0	3,20	1	527,00
NGEHP200 1903	200	231	518,0	295,0	4,60	1	598,00

**NGSB** Curva prolungata WC a pavimento

Codice	DN	DI mm.	L mm.	Z1 mm.	Z2 mm.	t mm.	Peso Kg./pz.	Conf. Pezzi	Conf. Bancale	€/Pz.
NGSBPR90 2372	110	115,0	129,0	69,0	65,0	134,0	0,55	10	120	31,00

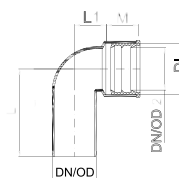
**NGSK** Manicotto WC

Codice	DN	DI mm.	L mm.	t mm.	Peso Kg./pz.	Conf. Pezzi	Conf. Bancale	€/Pz.
NGSK0110 2371	110	115,0	185,0	105,0	0,41	10	120	29,00

**NGS** Raccordo tecnico diritto con morsetto

Codice	DN D	DN D1 mm.	L mm.	M mm.	Peso Kg./pz.	Conf. Pezzi	Conf. Bancale	€/Pz.
NGS00301 2350	32	46x32	54,0	32,0	0,05	20	1200	7,30
NGS00401 2351	40	46x32	54,0	32,0	0,05	20	1200	7,30
NGS00404 2352	40	46x40	54,0	32,0	0,04	20	1200	7,30
NGS00501 2353	50	46x32	48,0	38,0	0,05	20	1200	7,30
NGS00505 2354	50	46x40	48,0	38,0	0,04	20	1200	7,30

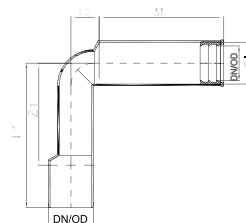
## NGSW Curva tecnica con morsetto



Codice	DN D	DN D1 mm.	L mm.	M mm.	Peso Kg./pz.	Conf. Pezzi	Conf. Bancale	€/Pz.	
NGSW0301	2360	32	46x32	76,0	31,0	0,05	20	1200	<b>7,30</b>
NGSW0401	2361	40	46x32	79,0	31,0	0,06	20	1200	<b>7,30</b>
NGSW0404	2362	40	46x40	79,0	29,0	0,05	20	1200	<b>7,30</b>
NGSW0501	2363	50	46x32	88,0	30,0	0,07	20	800	<b>7,30</b>
NGSW0505	2364	50	46x40	88,0	26,0	0,06	20	800	<b>7,30</b>
□ NGSW0502	2365	50	67x50	89,0	29,0	0,09	20	800	<b>7,30</b>

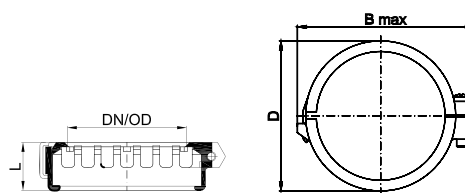
POLO-KAL NG

## NGSWPR Curva tecnica prolungata con morsetto



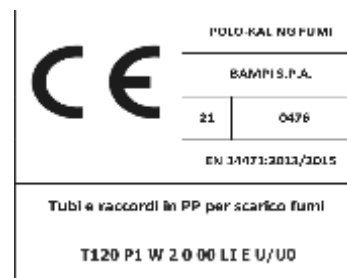
Codice		DN OD 1 e 2	DN ODI	L1 mm.	L2 mm.	Peso Kg./pz.	Conf. Pezzi	Conf. Bancale	€/Pz.	
	NGPR0401	2250	40/50	46x32	203,0	160,0	0,15	10	400	8,55
<input type="checkbox"/>	NGPR0404	2251	40/50	46x40	203,0	160,0	0,14	10	400	8,55
<input type="checkbox"/>	NGPR0502	2252	50	67x50	203,0	160,0	0,19	10	240	8,55

## POLO ASV Collare antisfilamento solo per sistema POLO-KAL NG



Codice		DN	D	B max mm.	L mm.	Resistenza sfilamento	Pressione massima interna	Peso Kg./pz.	Conf. Pezzi	€/Pz.
NGANTI32	1750	32	50,0	63,0	21,0	100 Kg.	2,5 bar	0,03	10	6,85
NGANTI40	1751	40	61,0	73,0	24,0	100 Kg.	2,5 bar	0,04	10	7,40
NGANTI50	1752	50	76,0	92,0	28,0	100 Kg.	2,5 bar	0,05	10	9,50
NGANTI75	1753	75	99,0	116,0	30,0	130 Kg.	2,5 bar	0,06	10	11,50
NGANTI90	1754	90	115,0	132,0	32,0	130 Kg.	2,0 bar	0,11	10	13,00
NGANTI11	1755	110	138,0	153,0	37,0	180 Kg.	2,0 bar	0,15	10	20,00
NGANTI12	1756	125	158,0	196,0	39,0	440 Kg.	2,0 bar	0,23	10	43,00
NGANTI16	1757	160	197,0	234,0	43,0	550 Kg.	2,0 bar	0,30	10	56,00
NGANTI20	1758	200	243,0	281,0	67,0	650 Kg.	1,5 bar	0,53	5	98,00
NGANTI25	1759	250	306,0	345,0	87,0	650 Kg.	1,0 bar	0,93	5	154,00

**Guarnizione** in EPDM nera omologata EN 14471 per FUMI



Codice	DN	Indicazioni	Conf. Pezzi	€/Pz.
NGEFUR11	110	La guarnizione in EPDM omologata per lo scarico di fumi e condense deve essere montata nella sede del bicchiere, in sostituzione della classica guarnizione nera in NBR già presente negli articoli per lo scarico idrico della gamma POLO-KAL NG.	5	2,90
NGEFUR12	125		5	3,60
NGEFUR16	160		2	9,20

**Raccordo di collegamento** con tratto suborizzontale completo di guarnizione in EPDM nera omologata EN 14471 per FUMI



Codice	DN D/D1	$\alpha$	L mm.	Peso Kg./pz.	Conf. Pezzi	€/Pz.
○ NGFU1111	110/110	93°	250,0	0,59	1	28,00
○ NGFU1212	125/125	93°	300,0	0,92	1	40,00
○ NGFU1616	160/160	93°	330,0	1,77	1	66,00

**Scarico condensa** con manicotto di drenaggio attacco DN 32 completo di guarnizione in EPDM nera omologata EN 14471



Codice	DN	L mm.	Peso Kg./pz.	Conf. Pezzi	€/Pz.
+ ○ NGFUSC11	110	151,0	0,41	1	35,00
+ ○ NGFUSC12	125	161,0	0,60	1	45,00
+ ○ NGFUSC16	160	184,0	1,06	1	58,00